



ELECTRODE REGULATION

Reg. sklopka :

MANUAL

2

2

260 V

OFF / ON / ACTIVE :

ACTIVE

Phase :

BUCKET # 1

Progress :

8.9 %

Electrodes reg :

MANUAL

7

7

14.0 kA

Soft regulation during refining :

NO

14.0 18.1 ELECTRODE # 1 260 220

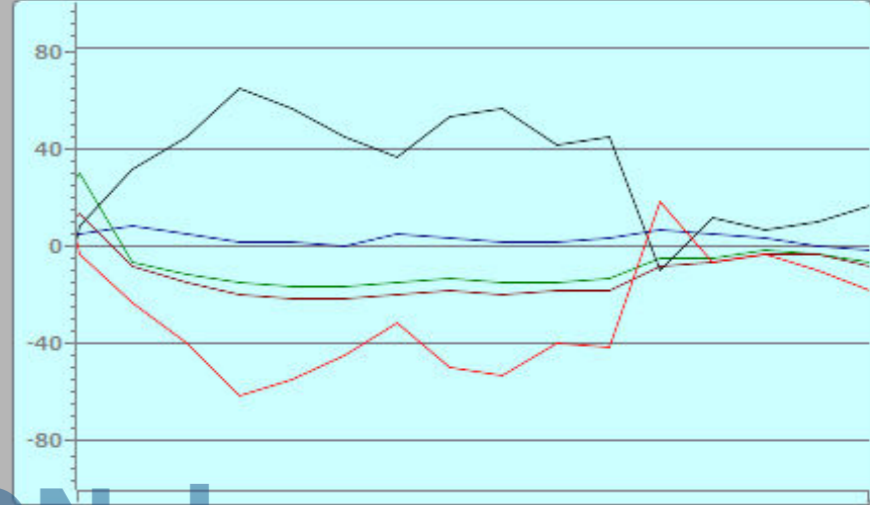
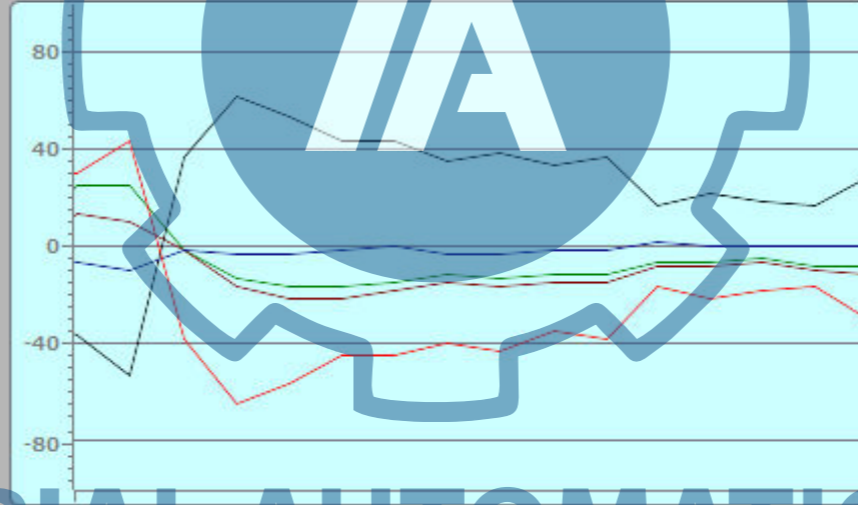
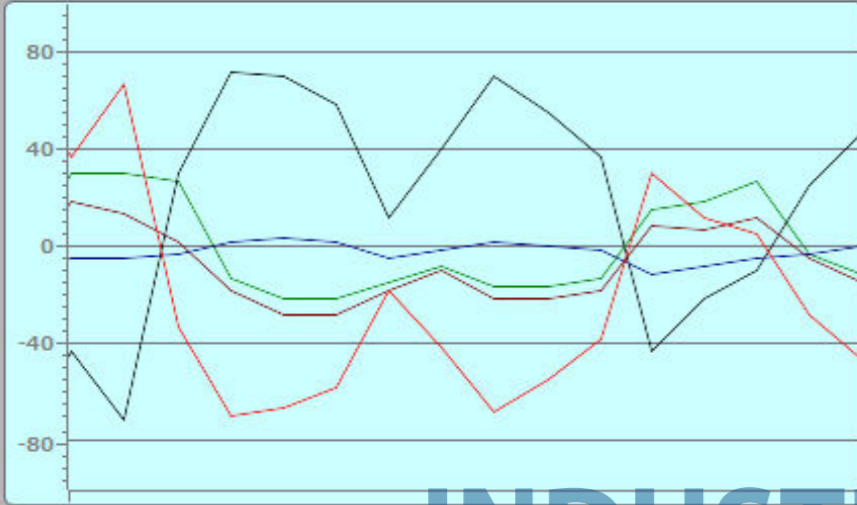
dA = +29.8 % dV = -7.7 % dAV = -37.5 %

14.0 15.6 ELECTRODE # 2 260 266

dA = +0.6 % dV = +1.2 % dAV = +0.6 %

14.0 16.8 ELECTRODE # 3 260 280

dA = +14.5 % dV = +3.9 % dAV = -10.6 %



Average dAV :



Average dAV :



Average dAV :



Regulation error :



Regulation error :



Regulation error :



Signal to EPV :



Signal to EPV :



Signal to EPV :



START DATA OVERVIEW FUSION EL. REG. PROTECT. HYDRAULICS MOVES TRENDS CONSENTS REPORTS F-TABLES R-TABLES

